



Oclean Smart Sonic Electric
Toothbrush User Manual

Oclean elektrinio dantų šepetėlio
vartotojo vadovas

Oclean Smart Sonic Electric
tandbørste brugervejledning

Elektrilise hambaharja Oclean Smart
Sonic kasutusjuhend

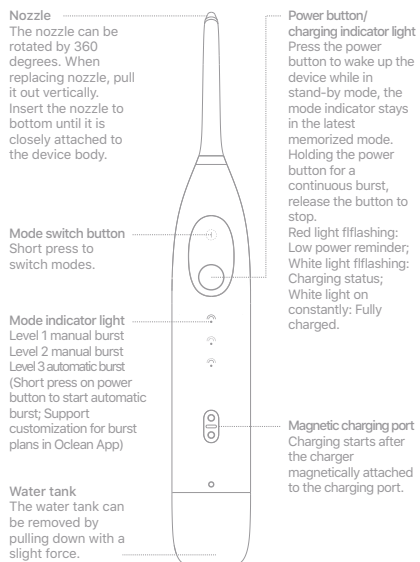
Oclean Smart Sonic elektriskās
zobu birstes lietotāja rokasgrāmata

Oclean Smart Sonic Electric
Tannbørste Brukerhåndbok

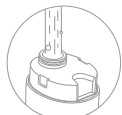
Oclean Smart Sonic -sähköham-
masharjan käyttöopas

Oclean Smart Sonic Electric
tandborste användarhandbok

Oclean W1 Smart Oral Irrigator User Manual

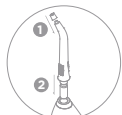


Instructions



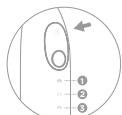
1 Refill the water tank

Pull down the water tank with a little force to detach it. Fill water or mouthwash into the water tank (The liquid temperature should not be over 40°C), then insert the water tank back into the device.



2 Installation of nozzle

1. Fix the silicone cap to the nozzle.
2. Insert the nozzle to the device body.



3 Mode switch

Short press on mode switch, chose the best fit mode, the device will memorize the latest mode.



4 Bursting Instructions

Put the nozzle intermittently close to the slit between teeth. Press and hold the power button to start cleaning. Slowly move along the gum line to the next zone, repeat the cleaning for all slit.

Product specifications

Product Name	Oclean W1 Smart Oral Irrigator
Model	Oclean W1
Water tank capacity	30 ml
Waterproof level	IPX5
Input Power	2.5 W
Charging	Oclean magnetic charging
Input	5V=0.5A
Battery life*	30 days
Battery capacity	1200 mAh
Charging time	3 hours
Standard	GB 4706.1-2005 GB 4706.59-2008

* Remark: Battery life is calculated based on default mode, working once/day, 1 tank/time.



R-R-yIT-Oclean W1



Remarks

- This indicates that the content of toxic and hazardous substances in all homogeneous materials of this component is less than the limited quantity as specified in GB/T 26572-2011.
- × This indicates that the content of toxic and hazardous substances in at least one of the homogeneous materials of this component is more than the limited quantity as specified in GB/T 26572-2011.
- * Except for very few materials, due to technical development reasons, most of the materials used are environmentally friendly. Please use this product with confidence during the environmental protection period.

Name of parts	Toxic and harmful substance or element						Environment Protection
	Pb	Hg	Cd	Cr6+	PBB	PBDE	
PCBA	○	○	○	○	○	○	10 years
Plastic parts	○	○	○	○	○	○	
Metal hardware	○	○	○	○	○	○	
FPC	○	○	○	○	○	○	
Vibrating motor	○	○	○	○	○	○	10 years
Accessories	×	○	○	○	○	○	
Battery	○	○	○	○	○	○	



Product model:	Serial Number:	
	Name:	
User Information	Tel:	
	Email:	
	Address:	
	Date of purchase:	
Problem Description:	Invoice number:	

Warranty Card

1. These clauses only apply to Oclean products sold in the country or region where the purchase is made, if there is any inconsistency or omission with the national policy, the national policy shall prevail.
2. For performance issues caused by the product itself, one may avail service as per below regulations with valid proof of purchase:
2.1 A customer can avail warranty service for free within 24 months from the date of purchase if there is a performance failure caused by the product itself.
3. In order to avail replacement and warranty services, one should show the valid proof of purchase.
4. Other product related materials (such as Packaging box, Product Manual etc.) are not covered in warranty.

Oclean W1 Smart Oral Irrigatori kasutusjuhend

Düüs
Düüsi saab pöörata 360 kraadi. Düüsi vahetamisel tõmmake see vertikaalselt välja. Sisestage düüs põhja, kuni see on seadme korpusega tihedalt seotud.

Režiimi vahetamise nupp
Režiimide vahetamiseks vajutage lühidalt.

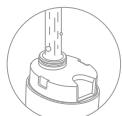
Režiimi märgutuli
1. taseme käsitsi purunemine
2. taseme käsitsi purunemine
3. taseme automaatse purskamine (Automaatse purske käivitamiseks vajutage lühidalt toitenuppu; toetage Ocleani rakenduses purskeplaanide kohandamist)

Veepaak
Veepaagi saab eemaldada, tõmmates seda kerge jõuga alla.

Toitenupp / laadimise märgutuli
Seadme äratamiseks ooterežiimis vajutage toitenuppu, režiimi indikaator jääb viimasesse meelde jäetud režiimi. Hoides toitenuppu pideva sarivõtte jaoks, vabastage nupp peatamiseks. Vilkvu punane tuli: meeldetuletus väikese võimsusega; Vilkvu valge tuli: laadimisolek; Valge tuli põleb pidevalt: täielikult laetud.

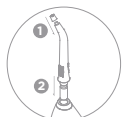
Magnetiline laadimisport
Laadimine algab pärast seda, kui laadija on laadimisportile magnetiliselt kinnitatud.

Juhised



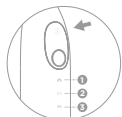
1 Täitke veepaak uuesti

Tõmmake veemahuti eemaldamiseks väikese jõuga alla. Täitke vesi või suuvesi veepaaki (vedeliku temperatuur ei tohiks olla üle 40 °C), seejärel pange veepaak seadmesse tagasi.



2 Düüsi paigaldamine

1. Kinnitage silikoonist kork otsiku külge.
2. Sisestage düüs seadme korpusele.



3 Režiimi lülit

Lühike režiimilülit sisselülitamine, parim režiim valitakse, seade jätab meelde viimase režiimi.



4 Purunemisjuhised

Pange otsik katkendlikult hammaste vahelise pilu lähedale. Puhastamise alustamiseks hoidke toitenuppu all. Liigutage aeglaselt mööda igemepiiri järgmiselt tsooni, korraldage puhastamist kogu pilu jaoks.

• Product specifications

Product Name	Oclean W1 Smart Oral Irrigator
Model	Oclean W1
Water tank capacity	30 ml
Waterproof level	IPX5
Input Power	2.5 W
Charging	Oclean magnetic charging
Input	5V=0.5A
Battery life*	30 days
Battery capacity	1200 mAh
Charging time	3 hours
Standard	GB 4706.1-2005 GB 4706.59-2008

* Remark: Battery life is calculated based on default mode, working once/day, 1 tank/time.



Follow the Oclean Official Facebook Page

Oclean Facebook Page
www.facebook.com/ocleanglobal



R-R-yIT-Oclean W1



EAC
IPX5
RoHS



Remarks

○ This indicates that the content of toxic and hazardous substances in all homogeneous materials of this component is less than the limited quantity as specified in GB/T 26572-2011.

× This indicates that the content of toxic and hazardous substances in at least one of the homogeneous materials of this component is more than the limited quantity as specified in GB/T 26572-2011.

* Except for very few materials, due to technical development reasons, most of the materials used are environmentally friendly. Please use this product with confidence during the environmental protection period.

Name of parts	Toxic and harmful substance or element						Environment Protection
	Pb	Hg	Cd	Cr6+	PBB	PBDE	
Vibrating motor	○	○	○	○	○	○	10 years
Accessories	○	○	○	○	○	○	5 years
Battery	○	○	○	○	○	○	5 years

Name of parts	Toxic and harmful substance or element						Environment Protection
	Pb	Hg	Cd	Cr6+	PBB	PBDE	
PCBA	○	○	○	○	○	○	10 years
Plastic parts	○	○	○	○	○	○	10 years
Metal hardware	○	○	○	○	○	○	10 years
FPC	○	○	○	○	○	○	10 years

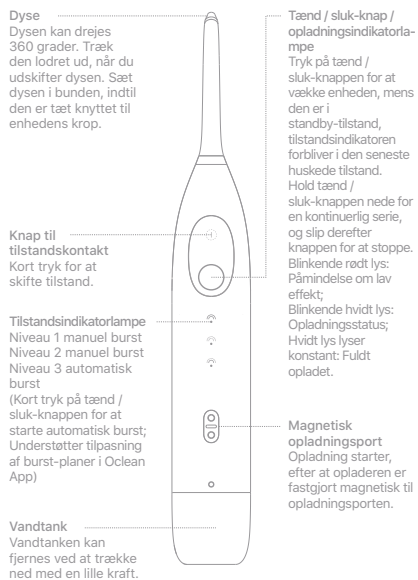


Product model:	Serial Number:	
	Nimi:	
Kasutaja teave	Tel:	
	Email:	
	Address:	
	Ostukuupäev:	
	Arve number:	
Probleemi kirjeldus:		

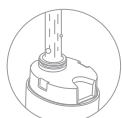
Garantii kaart

1. Neid klausleid kohaldatakse Oclean'i toodete suhtes, mida müüakse riigis või piirkonnas, kus ost tehakse, kui on vastuolu või puudujääke riikliku poliitika, lähtutakse riiklikust poliitikast.
2. Toote enda põhjustatud jõudlusprobleemide korral võib kasutada kehtivate ostuõenditega teenust vastavalt allpool toodud reeglitele.
- 2.1 Klient saab tasuta kasutada garantiiteenust 24 kuu jooksul alates ostukuupäevast, kui toote enda toimimises on rike.
3. Asendus- ja garantiiteenuste kasutamiseks peaksite esitama kehtiva ostuõendi.
4. Garantii ei hõlma muid tootega seotud materjale (näiteks pakendikarp, toote juhend jne).

Oclean W1 Smart Oral Irrigator Brugervejledning

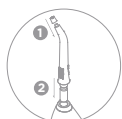


Instruktioner



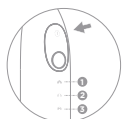
1 Genopfyld vandtanken

Træk vandtanken ned med lidt kraft for at løsne den. Fyld vand eller mundskyl i vandtanken (Væsketemperaturen bør ikke være over 40 °C), og sæt derefter vandtanken tilbage i enheden.



2 Installation af dysen

1. Fastgør silikonehætten til dysen.
2. Sæt dysen i enhedens hus.



3 Mode switch

Kort tryk på tilstandskontakten, vælg den bedste pasformstilstand, enheden husker den nyeste tilstand.



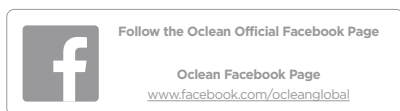
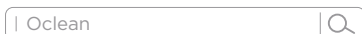
4 Sprængvejledninger

Sæt dysen med mellemrum tæt på spalten mellem tænderne. Tryk og hold tænd / sluk-knappen nede for at starte rengøringen. Flyt langsomt langs tandkødslinjen til den næste zone, gentag rengøringen for alle spalter.

• Product specifications

Product Name	Oclean W1 Smart Oral Irrigator
Model	Oclean W1
Water tank capacity	30 ml
Waterproof level	IPX5
Input Power	2.5 W
Charging	Oclean magnetic charging
Input	5V=0.5A
Battery life*	30 days
Battery capacity	1200 mAh
Charging time	3 hours
Standard	GB 4706.1-2005 GB 4706.59-2008

* Remark: Battery life is calculated based on default mode, working once/day, 1 tank/time.



IPX5
RoHS



Remarks

- This indicates that the content of toxic and hazardous substances in all homogeneous materials of this component is less than the limited quantity as specified in GB/T 26572-2011.
- × This indicates that the content of toxic and hazardous substances in at least one of the homogeneous materials of this component is more than the limited quantity as specified in GB/T 26572-2011.
- * Except for very few materials, due to technical development reasons, most of the materials used are environmentally friendly. Please use this product with confidence during the environmental protection period.

Name of parts	Toxic and harmful substance or element						Environment Protection
	Pb	Hg	Cd	Cr6+	PBB	PBDE	
Vibrating motor	○	○	○	○	○	○	10 years
Accessories	○	○	○	○	○	○	5 years
Battery	○	○	○	○	○	○	10 years

Name of parts	Toxic and harmful substance or element						Environment Protection
	Pb	Hg	Cd	Cr6+	PBB	PBDE	
PCBA	○	○	○	○	○	○	10 years
Plastic parts	○	○	○	○	○	○	10 years
Metal hardware	○	○	○	○	○	○	10 years
FPC	○	○	○	○	○	○	10 years



Garantikort

1. Disse klausuler gælder kun for produkter fra OcClean, der sælges i det land eller den region, hvor købet foretages, hvis den nationale politik er uoverensstemmende eller undladt med den nationale politik.
2. For ydelsesproblemer forårsaget af selve produktet kan man benytte service i henhold til nedenstående regler med gyldigt købsbevis:
2.1 En kunde kan benytte garantiservice gratis inden for 24 måneder fra købsdatoen, hvis der er en ydeevnefejlforsæt af selve produktet.
3. For at benytte udskrifts- og garantiservice skal man vise det gyldige købsbevis.
4. Andre produktrelaterede materialer (såsom emballageboks, produktmanual osv.) Er ikke dækket af garantien.

Product model:	Serial Number:	
	Navn:	
Brugeroplysninger	Tel:	
	Email:	
	Adresse:	
	Købsdato:	
	Faktura nummer:	
Problem Beskrivelse:		

Oclean W1 Smart Oral Irrigator -käyttöopas

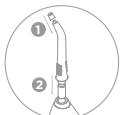


Ohjeet



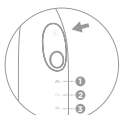
1 Täytä vesisäiliö

Irrota vesisäiliö pienellä voimalla alaspäin. Täytä vesi tai suuvesi vesisäiliöön (nesteen lämpötilan ei tulisi olla yli 40 °C), aseta sitten vesisäiliö takaisin laitteeseen.



2 Suuttimen asennus

- Kiinnitä silikonisuojaus suuttimeen.
- Aseta suutin laitteen runkoon.



3 Tilakytin

Lyhyt painallus toimintakytkimellä, valitaan parhaiten sopiva tila, laite tallentaa uusimman tilan.



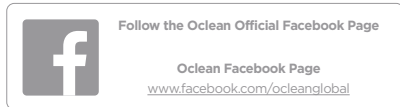
4 Räjähdysohjeet

Aseta suutin ajoittain lähelle hampaiden välistä rakoa. Aloita puhdistus pitämällä virtapainiketta painettuna. Siirry hitaasti kumilinjaa pitkin seuraavaan vyöhykkeeseen, toista puhdistus kaikille rakeille.

Product specifications

Product Name	Oclean W1 Smart Oral Irrigator
Model	Oclean W1
Water tank capacity	30 ml
Waterproof level	IPX5
Input Power	2.5 W
Charging	Oclean magnetic charging
Input	5V=0.5A
Battery life*	30 days
Battery capacity	1200 mAh
Charging time	3 hours
Standard	GB 4706.1-2005 GB 4706.59-2008

* Remark: Battery life is calculated based on default mode, working once/day, 1 tank/time.



Remarks

- This indicates that the content of toxic and hazardous substances in all homogeneous materials of this component is less than the limited quantity as specified in GB/T 26572-2011.
- × This indicates that the content of toxic and hazardous substances in at least one of the homogeneous materials of this component is more than the limited quantity as specified in GB/T 26572-2011.
- * Except for very few materials, due to technical development reasons, most of the materials used are environmentally friendly. Please use this product with confidence during the environmental protection period.

Name of parts	Toxic and harmful substance or element						Environment Protection
	Pb	Hg	Cd	Cr6+	PBB	PBDE	
Vibrating motor	○	○	○	○	○	○	10 years
Accessories	○	○	○	○	○	○	5 years
Battery	○	○	○	○	○	○	5 years

Name of parts	Toxic and harmful substance or element						Environment Protection
	Pb	Hg	Cd	Cr6+	PBB	PBDE	
PCBA	○	○	○	○	○	○	10 years
Plastic parts	○	○	○	○	○	○	10 years
Metal hardware	○	○	○	○	○	○	10 years
FPC	○	○	○	○	○	○	10 years



Takuukortti

- Näitä lausekkeita sovelletaan vain Oclean-tuotteisiin, joita myydään ostomaassa tai -alueella, jos kansallisen politiikan kanssa on ristiriitaisuuksia tai puutteita, kansallisen politiikan on oltava etusijalla.
- Tuotteen itsensä aiheuttamien suorituskykyongelmien voidaan käyttää aila olevien sääntöjen mukaista palvelua, jolla on voimassa oleva ostotodistus.
- 2.1 Asiakas voi käyttää takuupalvelua ilmaiseksi 24 kuukauden kuluessa ostopäivästä, jos itse tuotteesta havaitaan toimintahäiriö.
- Vaihto- ja takuupalveluiden käyttämiseksi sinun on esitettävä voimassa oleva ostotodistus.
- Takuu ei kata muita tuotteisiin liittyviä materiaaleja (kuten pakkauslaatikko, tuotekäsikirja jne.).

Tuotemalli:	Serial Number:	
	Nimi:	
Käyttäjän tiedot	Tel:	
	Email:	
	Osoite:	
	Ostopäivä:	
	Laskun numero:	
Ongelman kuvaus:		

Oclean W1 Smart Oral Irrigator User Manual



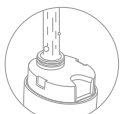
Product specifications

Product Name	Oclean W1 Smart Oral Irrigator
Model	Oclean W1
Water tank capacity	30 ml
Waterproof level	IPX5
Input Power	2.5 W
Charging	Oclean magnetic charging
Input	5V=0.5A
Battery life*	30 days
Battery capacity	1200 mAh
Charging time	3 hours
Standard	GB 4706.1-2005 GB 4706.59-2008

* Remark: Battery life is calculated based on default mode, working once/day, 1 tank/time.

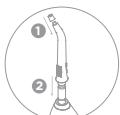


Instrukcijas



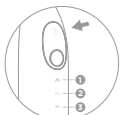
1 Uzpildiet ūdens tvertni

Ar nelielu spēku pavelciet ūdens tvertni, lai to atvienotu. Piepildiet ūdeni vai mutes skalojamo ūdeni tvertnē (šķidruma temperatūrai nevajadzētu pārsniegt 40 °C), pēc tam ievietojiet ūdens tvertni atpakaj ierīcē.



2 Sprauslas uzstādīšana

1. Piestipriniet silikona vāciņu pie sprauslas.
2. Ievietojiet sprauslu ierīces korpusā.



3 Režīma slēdzis

Īsi nospiežot režīma slēdzi, izvēlieties piemērotāko režīmu, ierīce iegaumēs jaunāko režīmu.



4 Sprādziena instrukcijas

Ievietojiet sprauslu periodiski tuvu spragai starp zobiem. Nospiediet un turiet ieslēgšanas / izslēgšanas pogu, lai sāktu tīrīšanu. Ieņem pārvietojieties pa smaganu līniju uz nākamo zonu, atkārtojiet visu spraugu tīrīšanu.



R-R-yIT-Oclean W1



IPX5
RoHS



Remarks

- This indicates that the content of toxic and hazardous substances in all homogeneous materials of this component is less than the limited quantity as specified in GB/T 26572-2011.
- × This indicates that the content of toxic and hazardous substances in at least one of the homogeneous materials of this component is more than the limited quantity as specified in GB/T 26572-2011.
- * Except for very few materials, due to technical development reasons, most of the materials used are environmentally friendly. Please use this product with confidence during the environmental protection period.

Name of parts	Toxic and harmful substance or element					
	Pb	Hg	Cd	Cr6+	PBB	PBDE
Vibrating motor	○	○	○	○	○	○
Accessories	○	○	○	○	○	○
Battery	○	○	○	○	○	○

Name of parts	Toxic and harmful substance or element					
	Pb	Hg	Cd	Cr6+	PBB	PBDE
PCBA	○	○	○	○	○	○
Plastic parts	○	○	○	○	○	○
Metal hardware	○	○	○	○	○	○
FPC	○	○	○	○	○	○



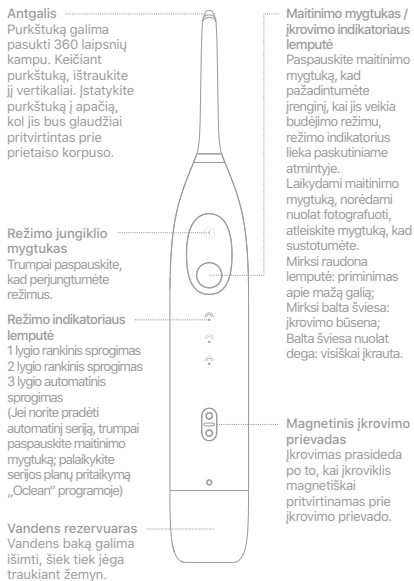
Garantijas karte

1. Šīs klauzulas attiecas tikai uz Oclean izstrādājumiem, kas tiek pārdoti valstī vai reģionā, kurā pirkums tiek veikts, ja ir kāda neatbilstība vai izlaids valsts politikai, noteicošā ir valsts politika.
2. Attiecībā uz veiktspējas problēmām, ko izraisa pats produkts, var izmantot pakalpojumu, kas atbilst zemāk esošajiem noteikumiem, ar dērgu pirkuma apliecinājumu:
- 2.1. Klients var bez maksas izmantot garantijas servisu 24 mēnešu laikā no pirkuma datuma, ja paša produkta deģerods darbības traucējumi.
3. Lai izmantotu nomaņtas un garantijas pakalpojumus, jāuzrāda dērgs pirkuma apliecinājums.
4. Garantija neattiecas uz citiem ar produktu saistītiem materiāliem (piemēram, Iepakojuma kārbā, Produkta rokasgrāmatā utt.).

Produkta modelis:	Sērījas numurs:
	Nosaukums:
Informācija par lietotāju	Tel.:
	Email:
	Adrese:
	Iegādes datums:
	Rēķina numurs:
Problēmas apraksts:	



Oclean W1 Smart Oral Irrigator vartotojo vadovas



Product specifications

Product Name	Oclean W1 Smart Oral Irrigator
Model	Oclean W1
Water tank capacity	30 ml
Waterproof level	IPX5
Input Power	2.5 W
Charging	Oclean magnetic charging
Input	5V=0.5A
Battery life*	30 days
Battery capacity	1200 mAh
Charging time	3 hours
Standard	GB 4706.1-2005 GB 4706.59-2008

* Remark: Battery life is calculated based on default mode, working once/day, 1 tank/time.

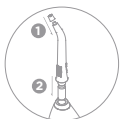


Nurodymai



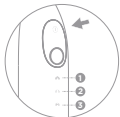
1 Užpildykite vandens rezervuarą

Nedaug jėgų patraukite vandens rezervuarą, kad jį nuimtumėte. Į vandens rezervuarą pripilkite vandens arba burnos skalavimo skysčio (skysčio temperatūra neturi viršyti 40 °C), tada įkiškite vandens rezervuarą atgal į prietaisą.



2 Antgalio montavimas

1. Pritvirtinkite silikono dangtelį prie antgalio.
2. Įkiškite purkštuką į prietaiso korpusą.



3 Režimo jungiklis

Trumpai paspaudus režimo jungiklį, pasirinktas geriausiai tinkantis režimas, prietaisas įsimins naujausią režimą.



4 Sprogimo instrukcijos

Purkštuką su pertraukomis uždėkite tarp plyšio tarp dantų. Norėdami pradėti valyti, palaikykite paspaudę maitinimo mygtuką. Lėtai judėkite dantėnų linija į kitą zoną, pakartokite valymą visiems plyšiams.

Remarks

- This indicates that the content of toxic and hazardous substances in all homogeneous materials of this component is less than the limited quantity as specified in GB/T 26572-2011.
- × This indicates that the content of toxic and hazardous substances in at least one of the homogeneous materials of this component is more than the limited quantity as specified in GB/T 26572-2011.
- * Except for very few materials, due to technical development reasons, most of the materials used are environmentally friendly. Please use this product with confidence during the environmental protection period.

Name of parts	Toxic and harmful substance or element					
	Pb	Hg	Cd	Cr6+	PBB	PBDE
Vibrating motor	○	○	○	○	○	○
Accessories	○	○	○	○	○	○
Battery	○	○	○	○	○	○

Name of parts	Toxic and harmful substance or element						Environment Protection
	Pb	Hg	Cd	Cr6+	PBB	PBDE	
PCBA	○	○	○	○	○	○	10 years
Plastic parts	○	○	○	○	○	○	
Metal hardware	○	○	○	○	○	○	
FPC	○	○	○	○	○	○	



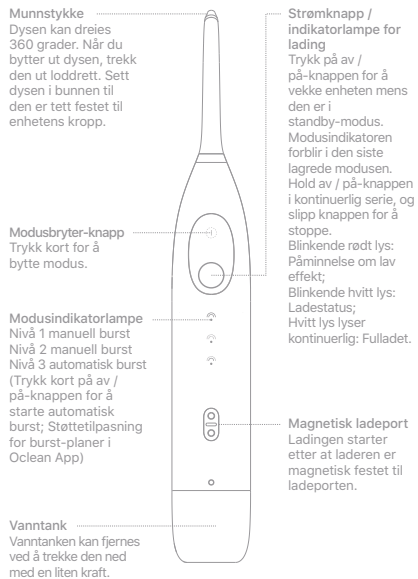
Garantijos kortelė

1. Šios sąlygos taikomos tik „Oclean“ gaminiams, paroduodamiems šalyje ar regione, kuriame perkama, jei yra neatitikimų su nacionaline politika, pirmenybė teikiama nacionalinei politikai.
2. Norėdami išspręsti problemas, susijusias su pačiu produktu, galite pasinaudoti garantiniu aptarnavimu pagal žemiau pateiktas taisykles su galiojančiu pirkimo dokumentu:
- 2.1 Klientas gali nemokamai naudotis garantiniu aptarnavimu 24 mėnesius nuo pirkimo datos, jei įvyko produkto gedimas.
3. Norint pasinaudoti pakeltimo ir garantinėmis paslaugomis, reikia pateikti galiojantį pirkimo dokumentą.
4. Garantija netaikoma kitoms su produktu susijusioms medžiagoms (tokioms kaip pakavimo dėžutė, gaminio vadovas ir kt.).

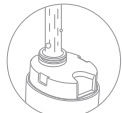
Produkto modelis:	Serijinis numeris:	Vardas:
		Tel:
Vartotojo informacija	Email:	Adresas:
	Pirkimo data:	Sąskaitos numeris:
	Problemos aprašymas:	



Oclean W1 Smart Oral Irrigator Brukerhåndbok



Bruksanvisning



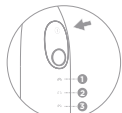
1 Fyll på vanntanken

Trekk vanntanken ned med litt kraft for å løse den. Fyll vann eller munnvann i vanntanken (væsketemperaturen bør ikke være over 40 °C), og sett deretter vanntanken tilbake i enheten.



2 Montering av dyse

1. Fest silikonhetten på dysen.
2. Sett dysen inn i enhetens kropp.



3 Modusbryter

Trykk kort på modusbryteren, velg modusen som passer best, enheten vil huske den siste modusen.



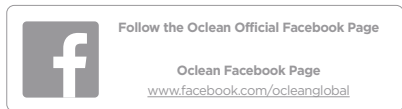
4 Bristeinstruksjoner

Sett dysen av og til nær spalten mellom tennene. Trykk og hold inne strømknappen for å starte rengjøringen. Beveg sakte langs tannkjøttlinjen til neste sone, gjenta rengjøringen for alle spalter.

Product specifications

Product Name	Oclean W1 Smart Oral Irrigator
Model	Oclean W1
Water tank capacity	30 ml
Waterproof level	IPX5
Input Power	2.5 W
Charging	Oclean magnetic charging
Input	5V=0.5A
Battery life*	30 days
Battery capacity	1200 mAh
Charging time	3 hours
Standard	GB 4706.1-2005 GB 4706.59-2008

* Remark: Battery life is calculated based on default mode, working once/day, 1 tank/time.



R-R-yIT-Oclean W1



Remarks

- This indicates that the content of toxic and hazardous substances in all homogeneous materials of this component is less than the limited quantity as specified in GB/T 26572-2011.
- × This indicates that the content of toxic and hazardous substances in at least one of the homogeneous materials of this component is more than the limited quantity as specified in GB/T 26572-2011.
- * Except for very few materials, due to technical development reasons, most of the materials used are environmentally friendly. Please use this product with confidence during the environmental protection period.

Name of parts	Toxic and harmful substance or element						Environment Protection
	Pb	Hg	Cd	Cr6+	PBB	PBDE	
Vibrating motor	○	○	○	○	○	○	10 years
Accessories	○	○	○	○	○	○	10 years
Battery	○	○	○	○	○	○	5 years

Name of parts	Toxic and harmful substance or element						Environment Protection
	Pb	Hg	Cd	Cr6+	PBB	PBDE	
PCBA	○	○	○	○	○	○	10 years
Plastic parts	○	○	○	○	○	○	10 years
Metal hardware	○	○	○	○	○	○	10 years
FPC	○	○	○	○	○	○	10 years

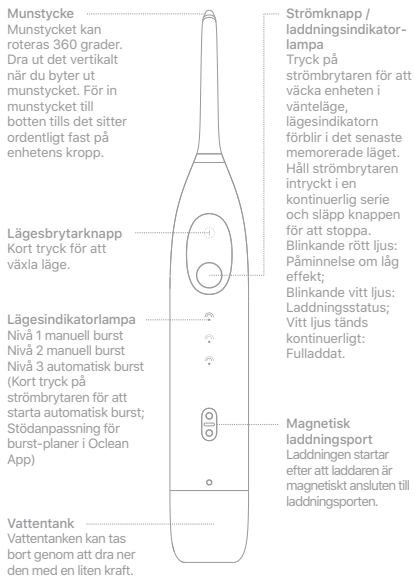


Garantikort

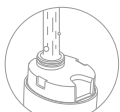
1. Disse klausulene gjelder bare for OcClean-produkter som selges i landet eller regionen der kjøpet er gjort, hvis det er uoverensstemmelse eller unnlattelse av den nasjonale politikken, skal den nasjonale politikken ha forrang.
2. For ytelsesproblemer forårsaket av selve produktet, kan man benytte seg av tjenesten i henhold til nedenstående forskrifter med gyldig kjøpsbevis:
 - 2.1 En kunde kan benytte garantiservice gratis innen 24 måneder fra kjøpsdatoen hvis det er en ytelsesfeil forårsaket av selve produktet.
 3. For å benytte erstatningstjenester og garanti tjenester, bør man vise gyldig kjøpsbevis.
 4. Andre produktrelaterte materialer (som emballasjeboks, produktmanual osv.) dekkes ikke av garantien.

Product model:	Serial Number:	
	Navn:	
Brukerinformasjon	Tel:	
	Email:	
	Adresse:	
	Kjøpsdato:	
	Fakturanummer:	
Problem beskrivelse:		

Oclean W1 Smart Oral Irrigator Användarmanual

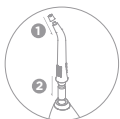


Instruktioner



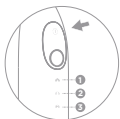
1 Fyll på vattentanken

Dra ner vattentanken med lite kraft för att lossa den. Fyll vatten eller munvatten i vattentanken (vätsketemperaturen bör inte vara över 40 °C) och sätt sedan tillbaka vattentanken i enheten.



2 Montering av munstycke

- Fäst silikonlocket på munstycket.
- Sätt in munstycket i enhetens kropp.



3 Lägesändring

Tryck kort på lägesomkopplaren, välj bästa passningssläge, enheten kommer att memorera det senaste läget.



4 Bristningsinstruktioner

Sätt munstycket periodvis nära slitsen mellan tänderna. Håll strömbrytaren intryckt för att börja rengöra. Rör dig långsamt längs tandköttslinjen till nästa zon, upprepa rengöringen för alla slitsar.

• Product specifications

Product Name	Oclean W1 Smart Oral Irrigator
Model	Oclean W1
Water tank capacity	30 ml
Waterproof level	IPX5
Input Power	2.5 W
Charging	Oclean magnetic charging
Input	5V=0.5A
Battery life*	30 days
Battery capacity	1200 mAh
Charging time	3 hours
Standard	GB 4706.1-2005 GB 4706.59-2008

* Remark: Battery life is calculated based on default mode, working once/day, 1 tank/time.



R-R-yIT-Oclean W1



IPX5
RoHS



Remarks

- This indicates that the content of toxic and hazardous substances in all homogeneous materials of this component is less than the limited quantity as specified in GB/T 26572-2011.
- × This indicates that the content of toxic and hazardous substances in at least one of the homogeneous materials of this component is more than the limited quantity as specified in GB/T 26572-2011.
- * Except for very few materials, due to technical development reasons, most of the materials used are environmentally friendly. Please use this product with confidence during the environmental protection period.

Name of parts	Toxic and harmful substance or element						Environment Protection
	Pb	Hg	Cd	Cr6+	PBB	PBDE	
Vibrating motor	○	○	○	○	○	○	10 years
Accessories	○	○	○	○	○	○	5 years
Battery	○	○	○	○	○	○	5 years

Name of parts	Toxic and harmful substance or element						Environment Protection
	Pb	Hg	Cd	Cr6+	PBB	PBDE	
PCBA	○	○	○	○	○	○	10 years
Plastic parts	○	○	○	○	○	○	10 years
Metal hardware	○	○	○	○	○	○	10 years
FPC	○	○	○	○	○	○	10 years



Garantikort

- Dessa klausuler gäller endast OcClean-produkter som säljs i det land eller den region där köpet görs, om det föreligger någon inkonsekvens med eller utelämnande av den nationella politiken, ska den nationella politiken ha företräde.
- För prestandafrågor orsakade av själva produkten kan man använda tjänsten enligt nedanstående regler med giltigt inköpsbevis:
 - En kund kan utnyttja garantisevice gratis inom 24 månader från inköpsdatum om prestandafel orsakas av själva produkten.
 - För att kuma använda ersättnings- och garantitjänster, bör man visa giltigt inköpsbevis.
 - Andra produktrelaterade material (som förpackningsbox, produktmanual etc.) täcks inte av garantin.

Produktmodell:	Serienummer:	
	Namn: Tel.: Email: Adress: Inköpsdatum: Fakturanummer:	
Användarinformation		
Problembeskrivning:		